







Installation instructions for BDL backup camera kit

for 2010/11 Nissan 370z with Sat Nav

What you should find in the kit:

 <p>Camera and mounting bracket</p>	 <p>Camera control box</p>	 <p>Camera power harness</p>
 <p>Camera video harness</p>	 <p>Display harness</p>	 <p>Extra double sided tape, cable ties and screw for camera</p>

Always check the online version of the instructions for the latest version

Please note: These instructions are from the perspective of a LHD vehicle (RHD will be added soon)

Tools you will need:

- Philips Screwdriver
- A [plastic trip tool](#) is useful but not required
- Something to fish the cables - A piece of TV/Cable coax or CAT5 cable is perfect



Step 1: Enabling the Backup Camera from the hidden menu:

First let's enable support for the backup camera in the hidden menu. This is a necessary step and will also confirm you have a model with the necessary software (there is little point in proceeding if you don't).

With Radio off

Press and hold the "Settings" button and turn the volume control counter clockwise.

After about 40 clicks the following menu will appear



Select "confirmation/adjustment" using the following control



Next move down to "Camera" and select



Then "Camera Syst Type" and change from "No Camera" to "With Rear view Camera"



Come all the way out of the menus using the back button and the system will reboot

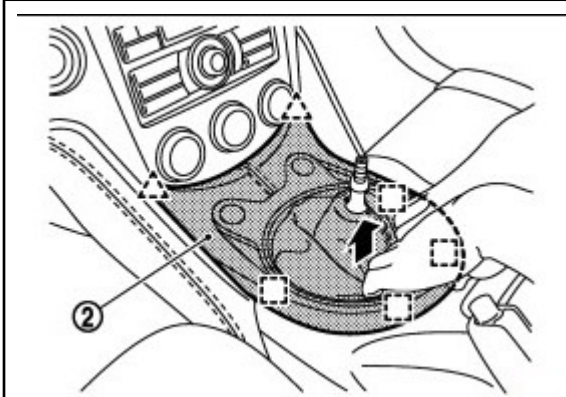
Now when you put the car in reverse a blue screen should appear with ***"Please check your surroundings"*** Message.

We will come back to configuring the reversing guidelines at the end so let's now move to the physical installation.

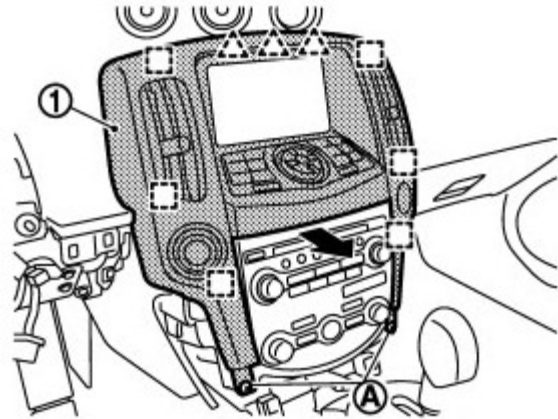
Note: Please be aware that other settings within the hidden menu are intended to be performed by the dealer with access to a Consult III and should not be played with (as tempting as it may be).

If you are going to disconnect the power before installing you will want to move the power seats forward so you can get to the screws shown in 5.2 (alternatively remove the screws first)

Step 2: Gaining access to the back of the Display



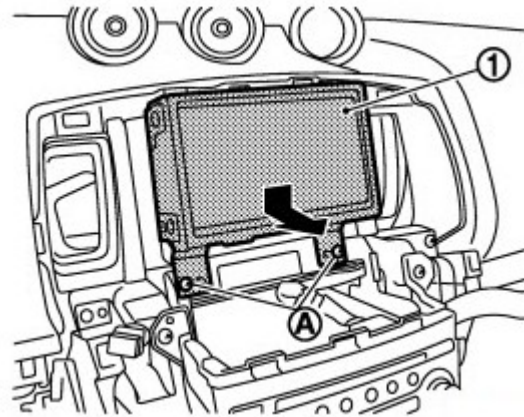
2.1) First remove the trim around the gear knob (there is no need to remove the knob the trim can just be lifter and rotated)



2.2) Remove the two screens labeled (A) to allow the removal of the dash trim.



2.3) You don't need to completely remove the trip just pull it forward enough to get the screen

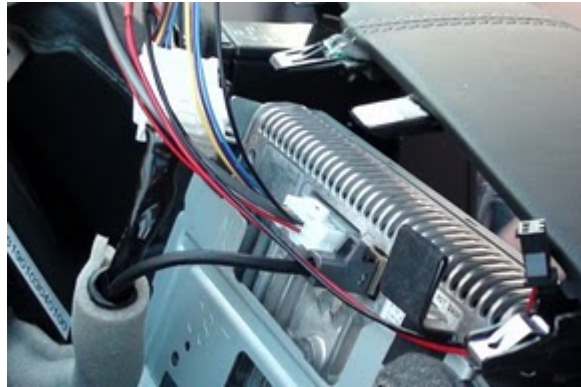


2.4) Remove the two screws labelled (A) and then remove the screen per the arrow.

Step 3: Inserting Display harness



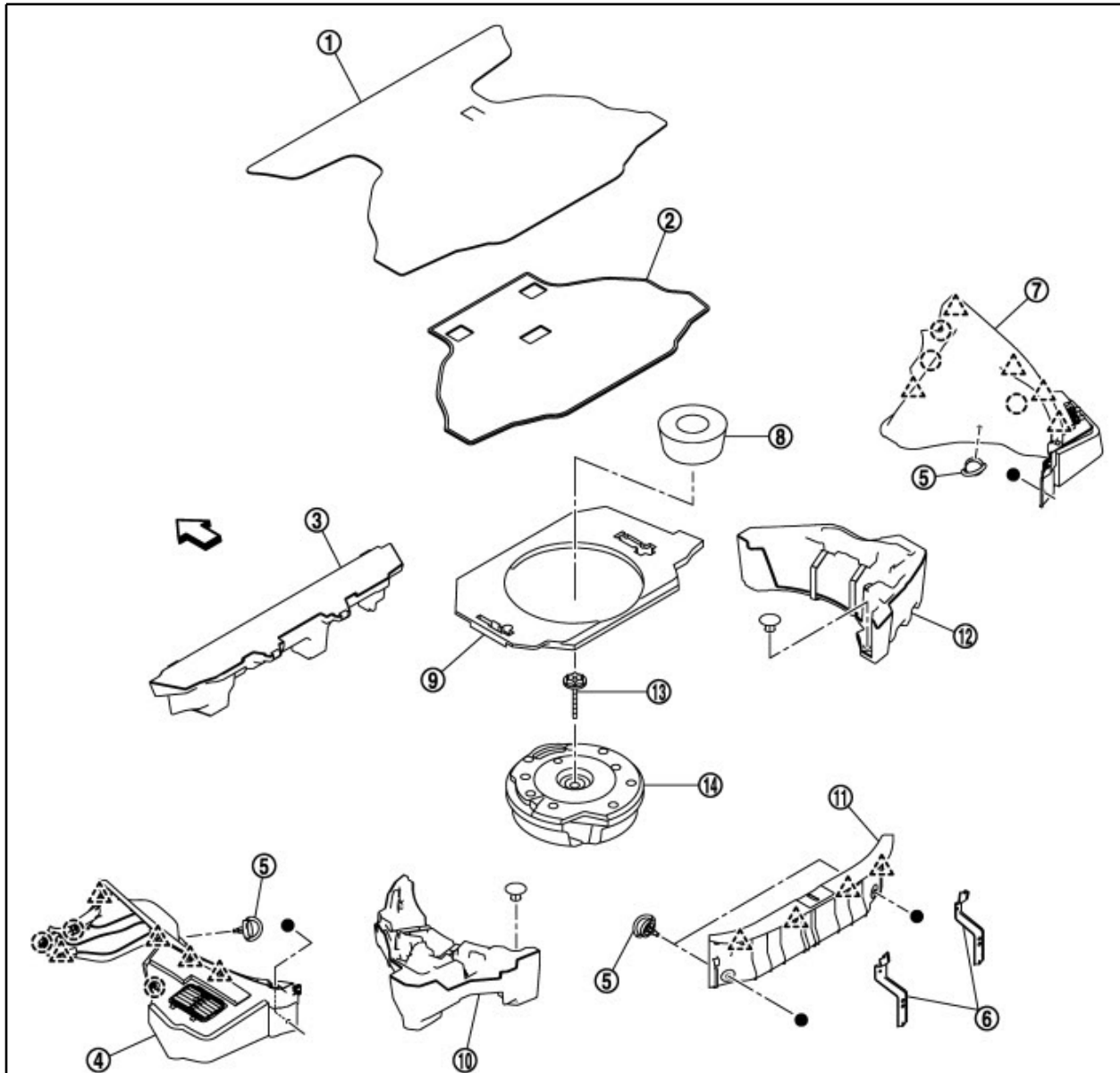
3.1) Remove the larger white plug from the back of the display



3.2) Insert the harness between the existing plug and the display

3.3) At this point everything should function as usual but you now have two power connectors and video-in for the backup camera

Step 4: Removing the trim from the trunk



4.1) Remove the trim in the Trunk

The following is based on feedback from N8GTOL

- Remove all the trunk mats and loose pieces.
- Pop out the 4 circle pins. (shown in 4a below)
- Lift the rubber trim (shown in 4b)
- Remove the rear trim piece closest to the license plate (shown in 4.3 below and item 11 above)
- Take out the center black Styrofoam piece
- Remove both side trim pieces (Note - you must pop out the black circle pins at the rear first, these circle pins were hidden by the rear trim piece before)
- After the side trim pieces are out you can finally remove the long Styrofoam piece under the strut brace.

Once this is done cables can be routed easily. looking at the diagram above the order the parts are removed is: 1, 2, 5, 11, 9, 4, 7, 3.

Note: The following video is also a great help <http://vimeo.com/7297076>



4a) In the trunk on the rear panel you will see clip/pins like the one above (#5 in the diagram above). They are all removed in the same manor, pull out the inner pin and then the outer/main piece will become loose

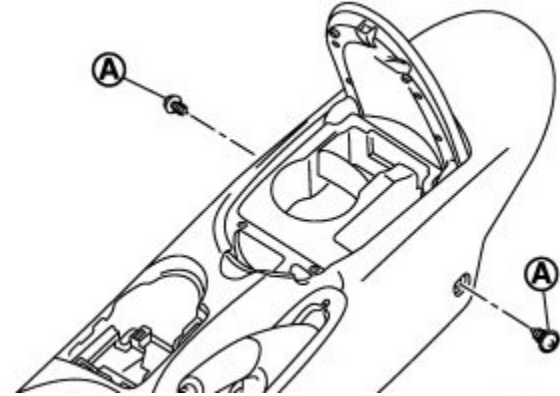


4b) Lift the rubber trim to help see the clips (see picture above). There are 4 clips along the top edge of the trim (Shown with triangles on item (11) above).

Step 5: Fishing the cables



5.1) The connector above needs to be routed from behind the screen to the trunk



5.2) Remove both screws labelled (A)



5.3) Once the center console/armrest is lifted up you can fish a cable to the trunk (shown in 5.4)



5.4) This shows the fish cable being routed from the location shown in picture 5.2

Step 6: Installing the camera



6.1) Remove the rear license plate and then using a piece of stiff cable (like coax or CAT5) cable fish from the grommet just below the light cluster to the hole shown in 6.2



6.2) You actually want to fish from the trunk to the left licence plate light hole, but it is easier to do it multiple steps. This picture shows the fish cable coming out the license plate hole

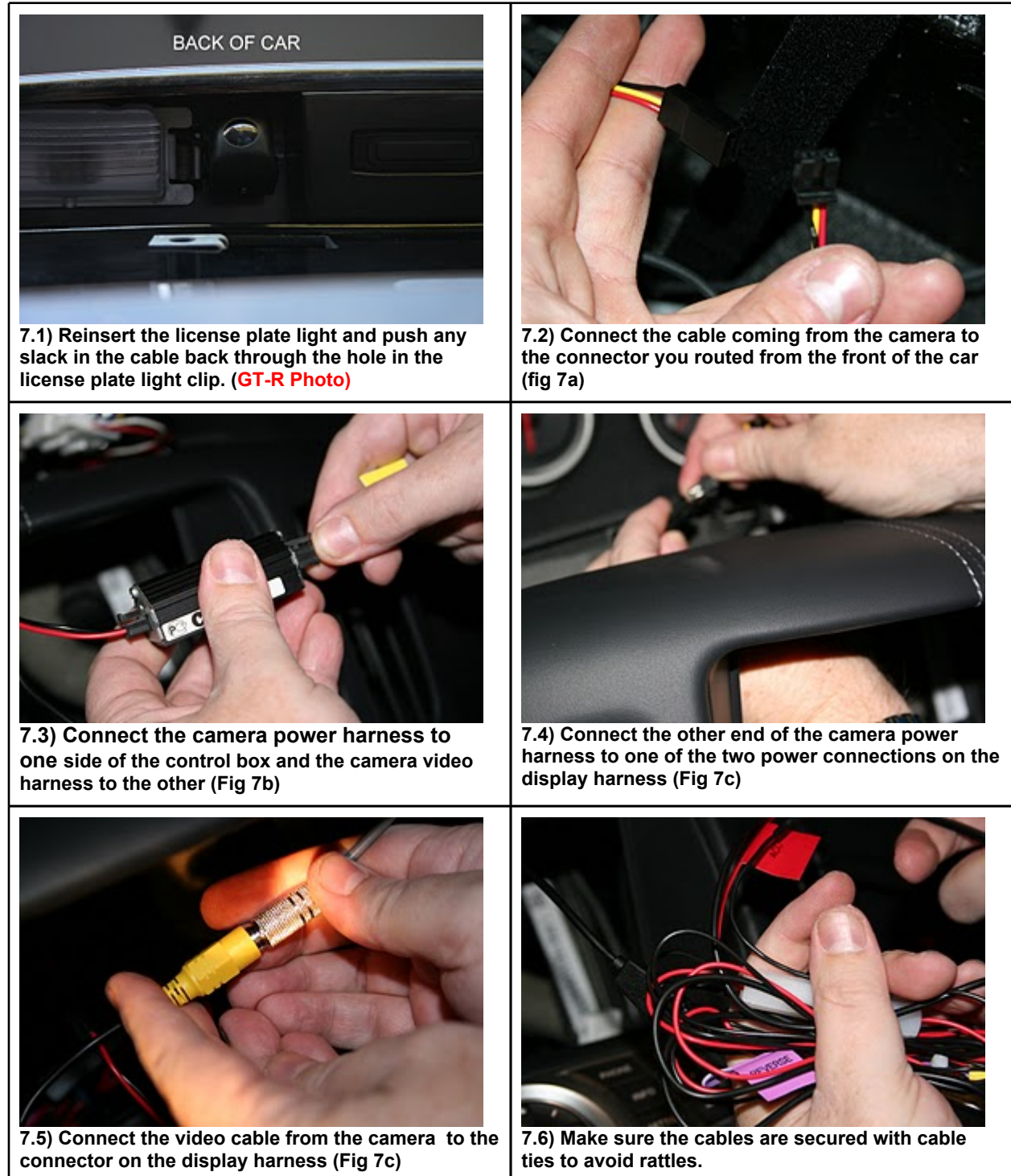


6.3) The camera should be positioned at the end of the slots for best results. You can either mount the bracket first and then attach the camera using just the left screw. Or fix the bracket to the car with the camera attached but if you do that leave the right screw a little loose to allow adjustment. You can use a small pair of pliers to loosen/tighten the screw on the inner side



6.4) Laying on the floor looking up - Mount the bracket to be aligned with the hole for the backup light. The double sided tap should be sufficient but the self tapping screw can be used if desired.

Step 7: Final Connections and Testing:



Placing the car in reverse you should now see the video feed from the camera on the display

Step 8: Configuring the grid lines

As before enter the hidden menu

With Radio off

Press and hold the “Settings” button and turn the volume control counter clockwise.

After about 40 clicks the menu will appear

As before select “Confirmation/Adjustment” and then “Camera”

Then select “Alter/Confirm Configuration”



The following will appear



Change “Predi. Course Lines” from “Without” to “With” and then enter the following settings

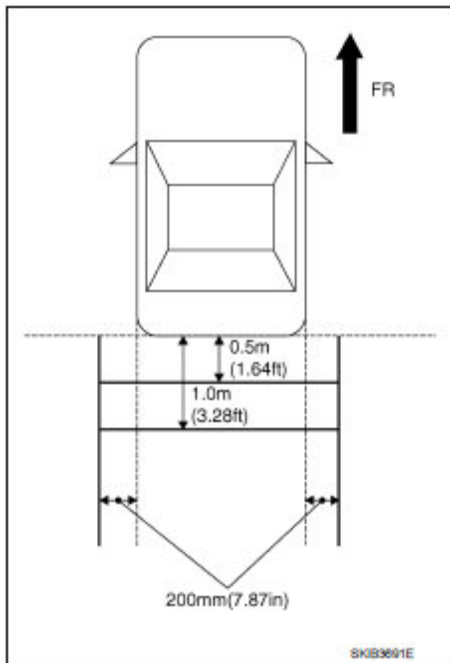
NOTE: Be very careful when entering these numbers as wrongly entered numbers can cause undesirable effects (nothing permanent but undesirable none the less, for example please note the 1st number is negative)

Rear Coeff. K	-38009.06	Rear L/R Angle	0.0000000
Rear Coeff. F	0.0014260	Rear Up/Dn Angle	48.830001
Rear Coeff. P1	0.0000062	Rear Roll Angle	0.0000000
Rear Coeff. P2	0.0000056	Bumper Rear Dist.	0.0381000
Rear Coeff. C1	823.00000	Bumper Rear Ax Dist	0.8990000
Rear Coeff. C2	480.00000	Steer. Max Angle	524.33856
Rear Coeff. D1	800.00000	Min. Turning Red.	5.3000002
Rear Coeff. D2	494.00000	Wheelbase	2.5501600
Car Width	1.8440400	Total Length	4.2468800
Rear Offset	0.0698500	Steering Gear Ration	15.100000
Rear Height	0.7366000		

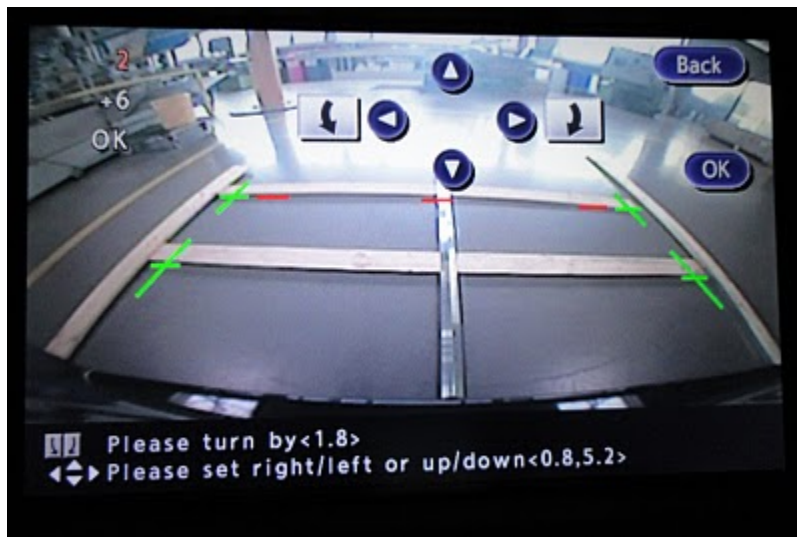
When you have finished be sure to click “OK” at the top of the screen to ensure settings are saved

Step 9: Fine tuning the grid lines (optional)

You can if you wish fine tune using the “Correct Draw Line of Rear view Camera”



Draw lines on rearward area of the vehicle passing through the following points: 200 mm (7.87 in) from both sides of the vehicle, and 0.5 m (1.64 ft), 1.0 m (3.28 ft) from the rear end of the bumper. The Nissan documentation says to align to the outer lines (with the 200mm offset), but I prefer to align to the inner lines.



With the car in reverse you will see the image from the camera superimposed on the screen.

Congratulations you have now completed the install

If anything was unclear in these instructions or could be improved please let me know. Also please share your experience with other owners in forums etc.