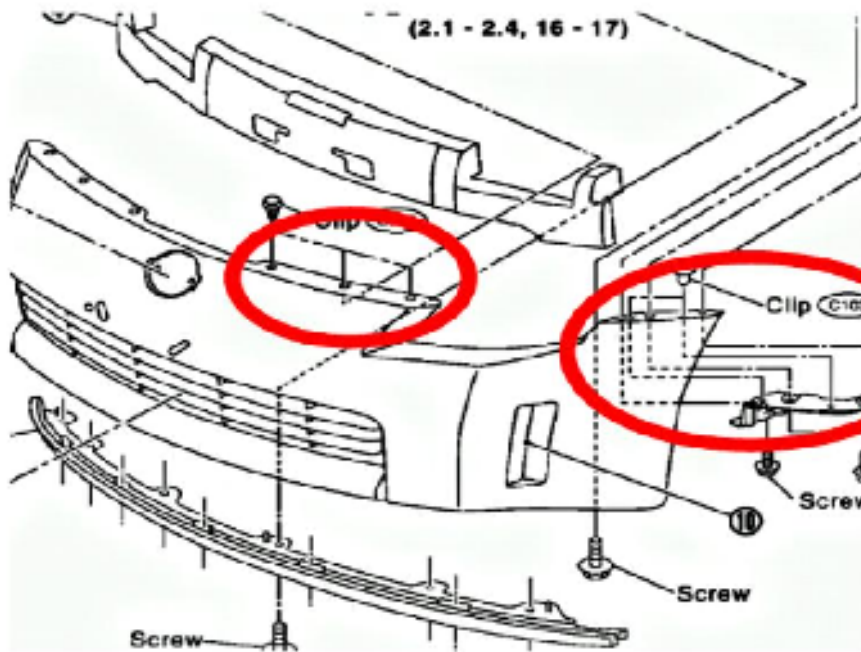


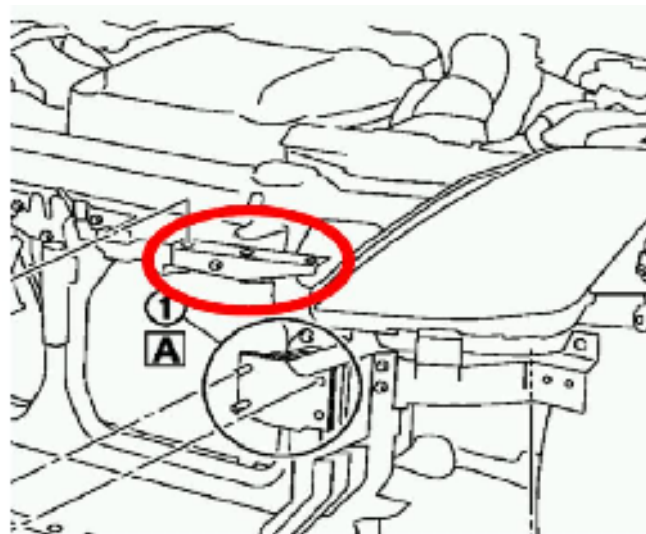
# EVO-R 350Z Front Air duct Installation

Remove marked in circle screws and clips.

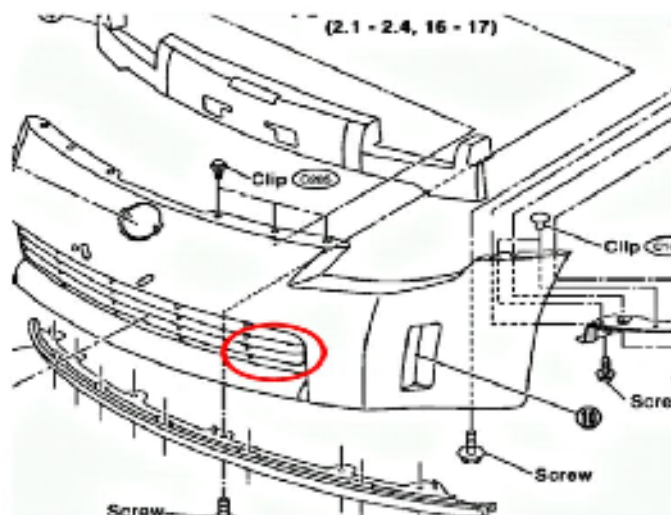


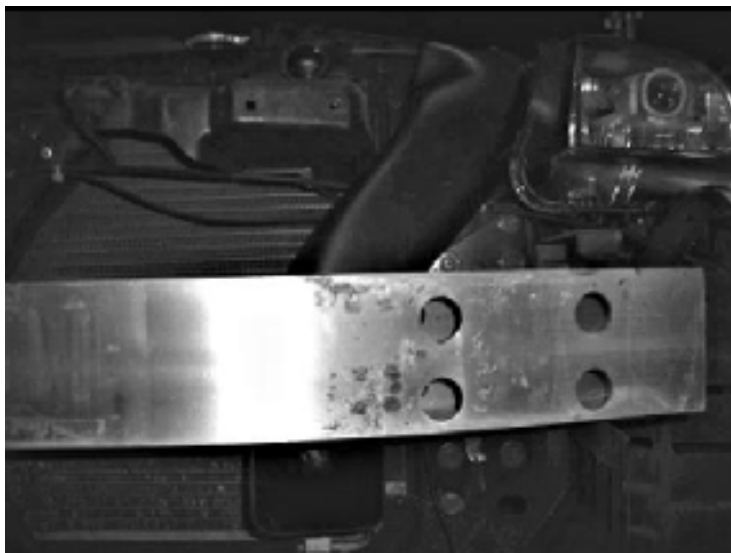
Pull the left side bumper forward.

Remove the item marked below. No need to place this back on once the air duct tube is in place.



Remove a black plastic plate inside the marked area. This plate will block your air duct inlet. This is where the duct gets fresh air.





Slide the air duct tube from the top of the radiator support. This might be hard. You'll need to push in hard. Once it is placed. The top air duct inlet should be close to the air box (air duct inlet). Top of the EVO-R air duct tube has two screw holes. Line up with two screw hold marked below. Put the original screw back on and secure the air duct tube. The bottom part of the tube should be secure line up with the bumper support.



Install the bumper back in the reverse order.

Please visit <http://www.evo-r.net/product/CAI/tube/index.htm> for more detail installed pictures.

**Thank you for your support! Enjoy your new EVO-R Air duct tube.**